



NWMM

**NORTHWESTERN
MANUFACTURING**

Precision machining of diverse alloys.



QUALITY FOR OVER 40 YEARS

From the commonplace to the complex, NWM has been delivering consistent quality for over 40 years incorporating the use of the latest in machining technology along with extensive experience in manual hardfacing and welding. NWM has the experience necessary to service various markets. A sample of the markets we serve are the Oil and Gas, High Pressure, Power Generation, Rubber Mixing and Fluid Control Valve industries.

SAMPLE MARKETS

- 1 Oil and Gas Equipment
- 2 High Pressure Equipment
- 3 Rubber Mixing Equipment
- 4 Power Generation Valves & Related Equipment
- 5 Fluid Control Valves & Related Equipment

**Contact us to speak directly with a consultant about your niche market.*



PRECISION MACHINING OF DIVERSE ALLOYS

NWM is an ISO Certified manufacturer that excels in projects involving diverse machining requirements and exotic materials. Our team has extensive expertise in the following alloys:

Exotic Alloys

- Inconel™ 600 / Inconel™ 625 / Inconel™ 718 / Inconel™ 725 / Inconel™ 800 / Inconel™ 825 / Inconel™ 945X / Inconel™ X750
- Monel™ 400 / Monel™ R405 / Monel™ K500
- Hastelloy™ C276 / Hastelloy™ C22
- A286
- 254SMO™ / 254SMO™ NORSOK
- AL6XN™
- MP35N
- 2205 Duplex / 2205 Duplex-NORSOK
- 255 Duplex / 255 Duplex-NORSOK
- 2507 Super Duplex / 2507 Super Duplex-NORSOK
- Titanium Grade 2 / Titanium Grade 5 (6AL4V) / Titanium Beta C
- Stellite™ #1 / Stellite™ #3 / Stellite™ #6 / Stellite™ #12 / Stellite™ #21
- Colmonoy™ #5 / Colmonoy™ #6 / Colmonoy™ #88
- Tungsten
- Beryllium Copper
- Nitronic™ 50 / Nitronic™ 50HS / XM19
- Nitronic™ 60 / Nitronic™ 60HS

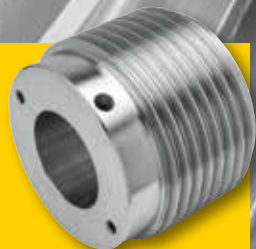
Standard Alloys

- Most Carbon Steels: 1018, A36, 1045, 12L14, 8620, ETC.
- Most Alloy Carbon Steels: 4130, 4140, 4330V, 4340, AR400, ETC.
- 316 High Tensile Stainless Steel Hexes, Rounds and Flats
- All 300 Series Stainless Steel
- All 400 Series Stainless Steel
- 17-4PH (All Heat Treatments)
- 15-5PH (All Heat Treatments)
- Most Bronze Alloys: C63000, C93200, C51000, C67300, ETC.
- Most Brass Alloys: C36000, C46400, ETC.
- All Aluminum
- Some Cast Iron
- Most Tool Steels

Plastics

- Teflon™ (PTFE) / Graphite Filled Teflon
- Nylon 6/6
- Peek / Glass Filled Peek / Peek PVX / Peek 450G
- Delrin™ 150
- Rulon™

SKILLED NWM CRAFTSMEN



MACHINING CAPABILITIES

The craftsmen at NWM are experts in the following areas:

- CNC Turning
- CNC Milling
- Multi-Axis CNC Machining
- Manual Machining
- CNC Swiss Machining

MACHINING EQUIPMENT

NWM's equipment inventory ensures a high level of capability, accuracy and productivity. Productivity is assured through the strength of our maintenance and set-up programs to keep machines operating at optimum speed and feed cycle times. NWM's equipment availability includes:

CNC Equipment

2004 Mazak QTN 200MS
2005 Mazak QTN100
2006 Mazak QTN150
2007 Mazak QTN200MY
2007 Mazak Integrex 200 4S
2008 Mazak QTN250MY
2008 Mazak VCN510C
2009 Mazak QTN100M
2009 Mazak QTN250MY
2009 Mazak VCN510C
2010 Mazak QTN200MY
2010 Mazak Integrex e500-H2
2011 Mazak QTN250MY
2013 Mazak QTN250MY
2013 Mazak QTN250MY
2013 Mazak VCN430A
2017 Mazak HCN5000
2017 Mazak HCN5000
2017 Mazak Palletec System
2018 Mazak QTN250MY
2018 Mazak QTN250

*2015 Tsugami B0326-II Swissturn
*2018 Tsugami B0326-II Swissturn
*2018 Tsugami B0206 Swissturn
2010 Epilog Fibermark Laser Etching

INTEGREX e500-H2 Specs

Max machining diameter: 32"
Max machining length: 120"
50HP milling spindle
40HP geared main spindle with 7 1/4" thru hole
Y-Axis Stroke +/-10"
Full simultaneous 5-Axis contouring
120 tools (CAT50)
Max face mill: 10" dia.
2 position long boring bar stocker
Max Drill Depth 39"
Max Boring Depth 39"
Tail Stock
Manual RIP steady rest: Max Diameter 18"
Manual RIP steady rest: Max Diameter 25"
Mazatrol Matrix
ISO EIA capable (G-Code Input)
4,000 lb overhead crane

*www.hypertekprecision.com



NWM HARDFACING & WELDING

HARDFACING CAPABILITIES

NWM is a Manual Hardfacing and Welding Specialist. We know that the application of hardfacing has long been used to increase the service life of heavy use wear surfaces. NWM provides hardfacing of substrates which include:

- Cobalt Alloys
- Nickel Alloys
- Stainless Steel
300 & 400 Series
- Inconel
- Monel
- Carbon Steel
- Chrome Alloys

Application Processes Include:

- Oxy-Fuel
- GTAW
- GMAW
- FCAW
- SMAW

Our range encompasses $\frac{1}{8}$ " outside diameter and larger, 1" inside diameter and larger. As with all NWM services, our hardfacing services are backed up by a robust quality program and flexible manufacturing systems. NWM is qualified to ASME Sections VIII & IX.

WELDING CAPABILITIES

NWM's skilled welders work with all types of metal including Aluminum, Stainless Steel, Carbon Steel and Chrome Moly alloys. We also work with alloys including Hastelloy® and Inconel®.

- Gas Tungsten Welding (GTAW)
- Shielded Metal Arc Welding (SMAW)



COMMITTED TO QUALITY

NWM's commitment to quality is personified by a full time quality assurance staff, which performs inspections, and qualifications, maintaining our stringent quality standards.

VALUE ADDED

- Laser engraving
- Specialty threading
- Family owned and operated for over 40 years
- Multi-media sand blasting
- Polishing
- Vibratory Finishing
- Dedicated and well trained customer service team on location
- Quick turnaround times
- Fast worldwide shipping

NEED A QUOTE IN A HURRY?

Contact us to speak directly with a business consultant about your project today!

814.774.2866 or www.nw-mfg.com

NWMM
NORTHWESTERN
MANUFACTURING

9704 Martin Avenue Lake City, PA 16423
PH 814.774.2866 / FX 814.774.2993
www.nw-mfg.com / ISO 9001

